



# Magic Markers

## Contents

knitCompanion Modes .....	2
What are Magic Markers \$ .....	3
Color-code stitches .....	3
Count stitches .....	3
Change colorwork colors .....	3
Work with any chart .....	4
Types of Magic Markers .....	4
Magic Markers .....	4
Custom Markers .....	4
Add Magic Markers .....	5
Adjust Wand Sensitivity .....	6
Color Search .....	7
Handle Color and Grayscale Stitches .....	7
Search Rows .....	8
Manually Trim .....	8
Count .....	9
Start Count .....	9
Show Count .....	9
Color and Transparency .....	10
Add Custom Markers .....	10
What about Cables? .....	11
Charts with Symbols .....	12
Recolor a Colorwork Chart .....	13
Match Your Yarn Colors .....	13
Magic Swatching .....	14




## knitCompanion Modes

Every project has its own Main Knitting page so you can have many projects going at once and never lose track!

knitCompanion provides three modes for you to work with:

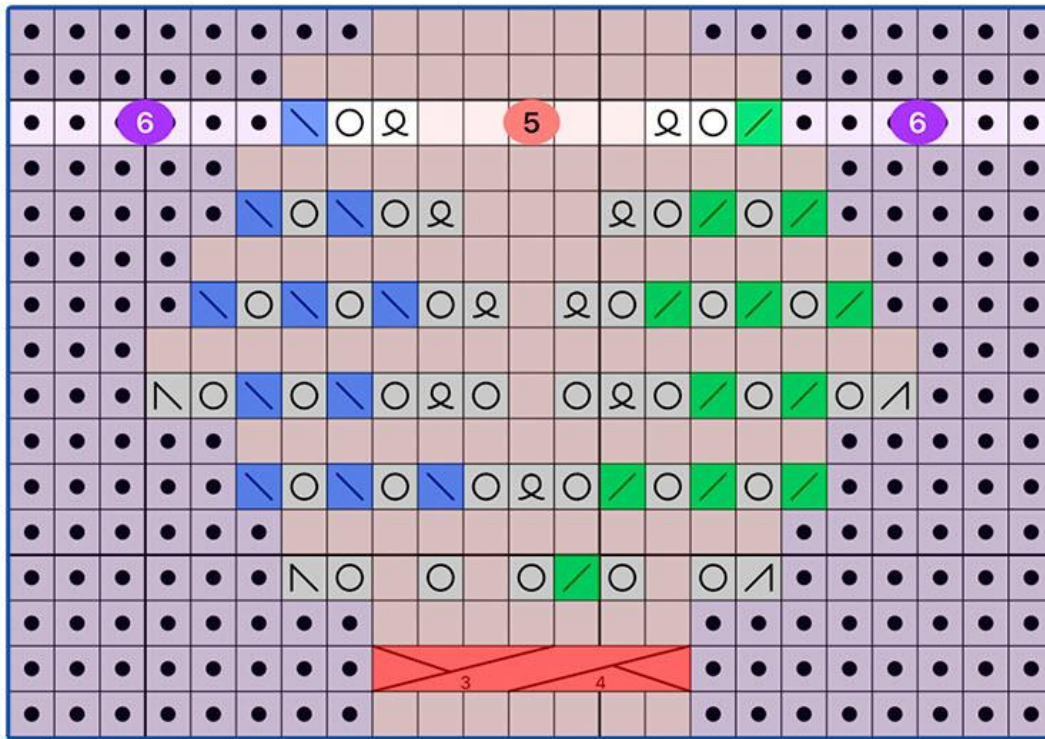
1. **Knit:** Where you will be knitting your project. *See the Getting Started guide for more information.*
2. **Edit:** Customize your project using tools to add highlights and notes, customize markers and counters, add project info, etc. **Magic Markers** find, color, and count stitches in your chart and are covered in this guide. *See the Edit Mode guide for information on other Edit features.*
3. **Setup:** Overcome challenges such as joining charts together, adding reminders, repeats, and shaping. Setup is also where you add a one-tap marker. *See the Setup guide for more information.*

You can switch between Knit, Edit, and Setup modes anytime.

- Tap  to change the mode.
- This guide covers Magic Markers which are accessed in Edit Mode.
- Access to Edit Mode requires a subscription or that the project was created using a kCDesign.
- To enter Edit Mode, tap **Edit** .
- Because of the smaller width of the phone screen or when using slide over and split screen, use the Mode button  to switch between Knit, Edit, and Setup.

## What are Magic Markers \$

Magic Markers find, color, and count stitches in your chart. No need to hunt for all the k2tog; select a sample stitch, tap the wand, and Magic Marker finds the rest!



## Color-code stitches

Want your ssk blue and your k2tog green? How about making all 2x2 left cables blue and 2x2 right cables red? Magic Markers can do this!

## Count stitches

Does the pattern have long stretches of knits and purls between an *action*. Magic Markers can count how many stitches there are in a row and automatically display the count. No more counting!

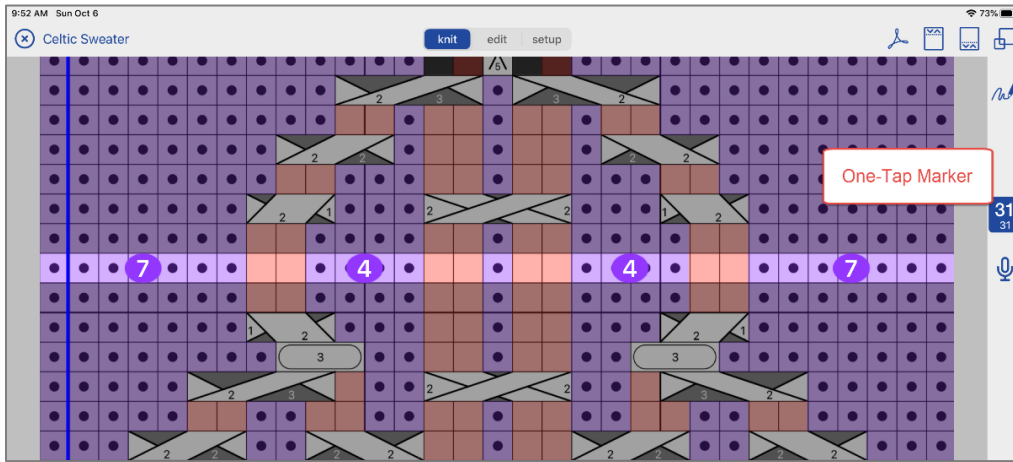
## Change colorwork colors

Make your colorwork chart match your chosen knitting colors. Find each color (or symbol in place of color) and apply your own color choice.

## Work with any chart

Magic Markers work with any chart that has a one-tap marker, even paper scans.

*See the Setup Mode guide for more information on the one-tap marker.*



There are two ways to get a chart piece in kC:

1. Use a kCDesign (all the setup is done so you can just knit).

*See the Getting Started guide for more information on kCDesigns.*

2. Tell knitCompanion about your chart using Setup.

*See the Setup Mode guide for more information setting up a chart piece.*

## Types of Magic Markers

There are two types of Magic Markers.




### Magic Markers

Select a sample of the stitch, tap the wand, and the system finds all the matching stitches.

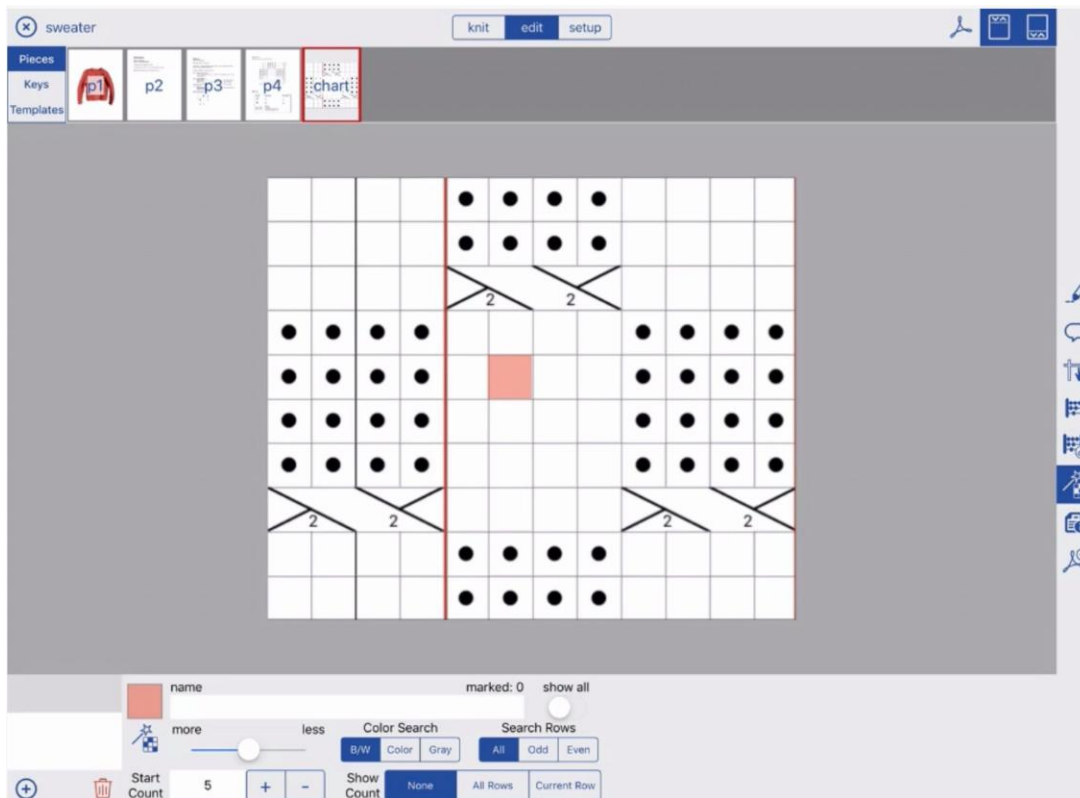
### Custom Markers


Custom Markers are like Magic Markers but without the wand. Custom Markers are useful for marking specific stitches. For example, marking bead placement, errata, and counting longer runs of non-matching stitches.

## Add Magic Markers

1. Switch to **Edit Mode** .
2. Tap the Magic Markers  button at the right.
3. Tap  and select **Magic Marker**.
4. Tap a sample of the stitch you want to find.

*Pro Tip:* The best sample will typically be placed in the center area of the chart, rather than at the edges.



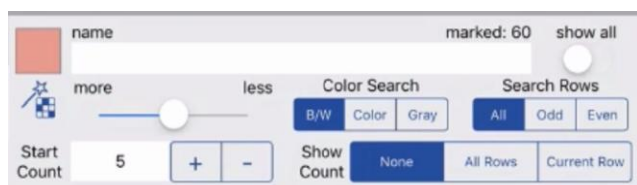
5. Tap the wand  at the bottom and it will find all the matches.
6. **Name:** Name the stitch.
7. **Wand Sensitivity:** If needed, adjust the wand sensitivity.  
*See below for more information.*
8. **Color Search:** Magic Markers can recognize color. This means you can find stitches based on color and shades of gray when you tap the wand.  
*See below for more information.*

9. **Search Rows:** Specify whether to search all rows, only odd rows, or only even rows.  
*See below for more information.*
10. **Manually Trim:** If needed, manually trim the search results by tapping.  
*See below for more information.*
11. **Count:** Once the correct stitches are found, Magic Markers can count long runs of stitches in the chart.  
*See below for more information.*
12. **Color and Transparency:** Once the correct stitches are found, set the color and transparency.  
*See below for more information.*

## Adjust Wand Sensitivity

The wand can be adjusted to find more or less stitches. The wand is set to center by default, which suits most charts. It can be adjusted for greater or lesser sensitivity by dragging it towards *more* or *less*.

**IMPORTANT!** Remember to tap the wand again after adjusting the slider.



- Slide to **more** and then *tap the wand again* to find more stitches that match your sample.
- Slide to **less** and then *tap the wand again* to find less stitches that match your sample.

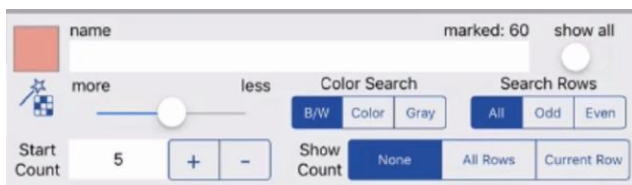
## Color Search

Magic Markers can recognize color. This means you can find stitches based on color and shades of gray when you tap the wand.

### Handle Color and Grayscale Stitches

If your chart is a colorwork or grayscale chart, Magic Markers can see the color differences. You can make the magic wand sensitive to color, greyscale, or to even ignore color by using the BW / Color / Gray options.

**IMPORTANT!** Remember to tap the wand again after making your selection.



- **B/W:** If you leave the wand at B/W (black and white) it will ignore color on your chart and find all matches to your sample no matter the color. This is the default setting and works well for most charts that are not colorwork.
- **Color or Gray:** If you select Color or Gray and then tap the wand, it will find the shade of gray or color you picked as your sample.

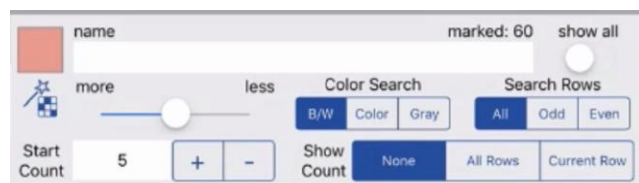
Important: Tap the wand after making this adjustment.

*Pro Tip:* Once you have each marker set as desired, using the Show All option to see all markers together, allowing you to visualize and experiment with different color choices. We call this *Magic Swatching!*

## Search Rows

Magic Markers can search all rows, only odd rows, or only even rows.

**IMPORTANT!** Remember to tap the wand again after making your selection.



- **All:** Search all rows when you tap the wand.
- **Odd:** Search only odd numbered rows when you tap the wand.
- **Even:** Search only even numbered rows when you tap the wand.

This is helpful with flat knitting when symbols on wrong side rows are worked differently than on the right side.

*Pro Tips:*

- Apply color as a visual aid to help you remember how to work stitches when they are on the wrong side.
- Use different Named Colors for a stitch, one for the RS and one for the WS. Then add the proper description for how to do that stitch on each side and tap to see it as you work. Quickly get the step-by-step instructions unique to the WS!

*See the Working with Color guide for more information on the Named Colors.*

## Manually Trim

Before using **Manually Trim**, adjust the settings above (More/Less Slider, Color Search, etc) to find the best possible match. This is because if you tap the wand, any manual trim is lost.

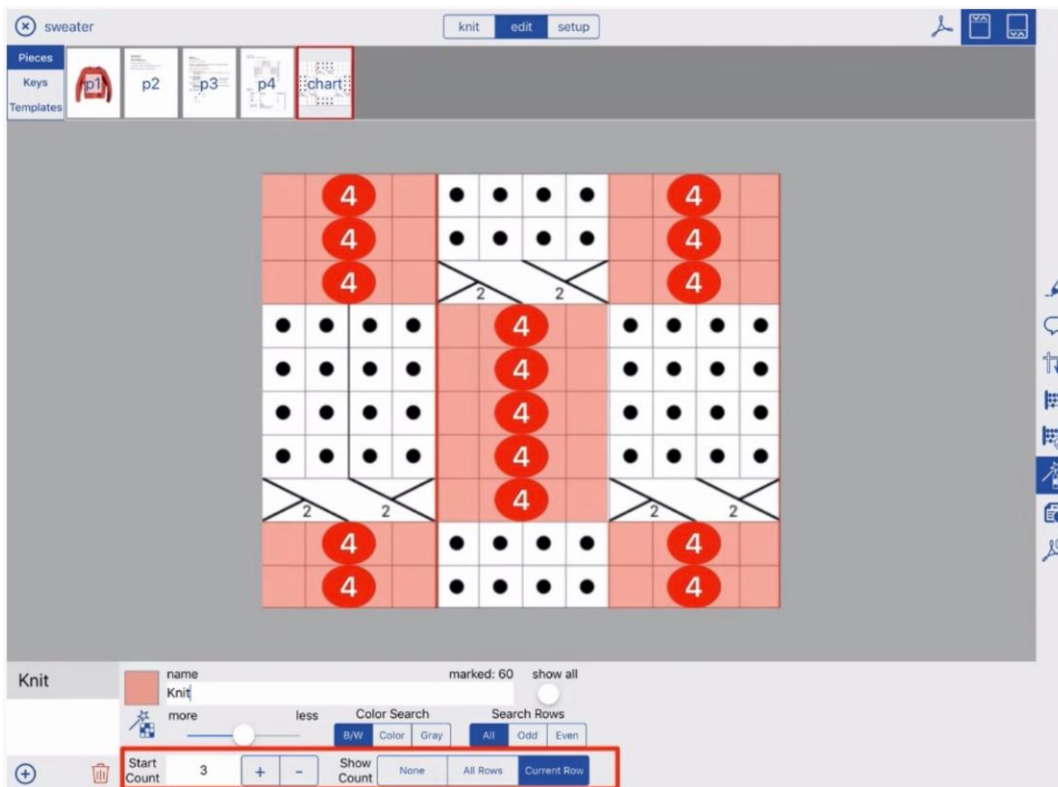
If adjustments are still needed, you can manually trim the search results by tapping a stitch to toggle it on/off.

- Toggle a stitch ON to **include** it in the search results.
- Toggle a stitch OFF to **exclude** it from the search results.



## Count

Magic Markers can count long runs of stitches in the chart. Once you have found all the matching stitches, define the **Start Count** and **Show Count**.



## Start Count

Set the minimum number to count. In the example above, the Start Count is set to 3. This means Magic Markers will count any run of stitches with 3 or more stitches.

## Show Count

Specify how you would like the counts to appear as you move between rows.

- **Current Row:** Stitch counts are shown only for the row being worked.
- **All Rows:** Stitch counts are shown for every row as you work.
- **None:** Stitch counts are not shown on any row as you work.

## Color and Transparency

Once the correct stitches are found, set the color and transparency.



*See the Working with Color guide for more information on the Color Picker.*

*Pro Tip:* It may be helpful to leave a small amount of tint on counted stitches to make it easier to see what is included in the count while knitting.

## Add Custom Markers

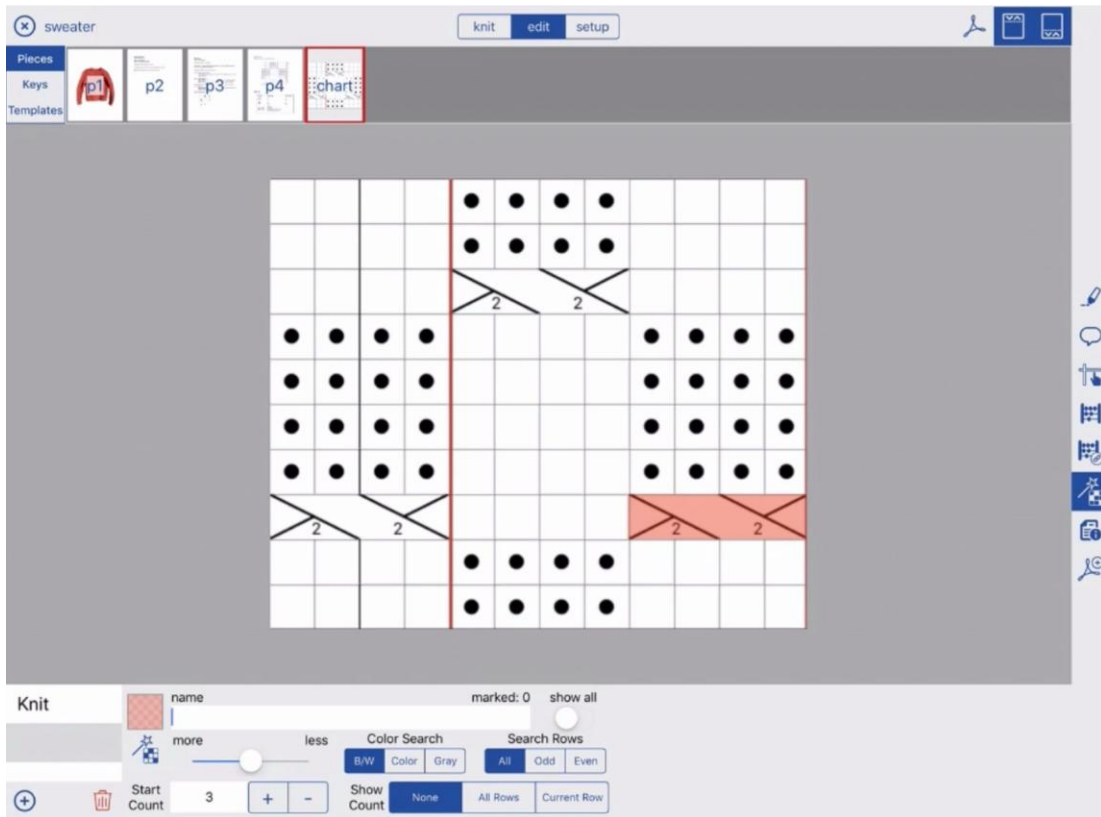
Custom Markers are like Magic Markers but without the wand. Custom markers are useful for marking specific stitches such as bead placement, errata, counting longer runs of non-matching stitches.

To add custom markers:

1. Switch to **Edit Mode** and tap the  button.
2. Tap  and select **Custom Marker**.
3. Tap each stitch you would like to mark.  
Tap the stitch again to toggle it off.
4. Set the color, transparency, and optional count.  
*See above for more information on setting these options.*

## What about Cables?

Magic Markers can find both individual and wide stitches, including cable stitches.



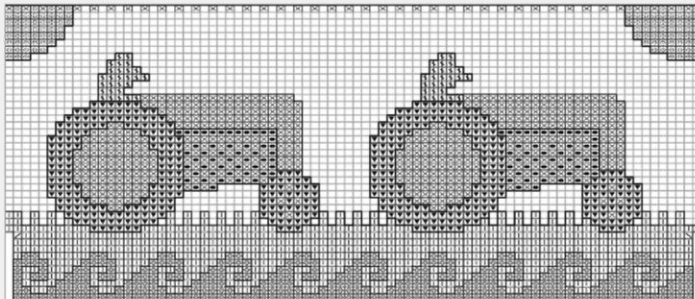
We have some cables in the chart above.

1. Select the entire width of the cable (this cable covers four stitches).
2. Tap the wand.

Magic Markers finds all the matches and colors them with your chosen color.

## Charts with Symbols

When working a symbol-based color chart, you can apply your color choices by symbol. This color changing makes it easier to knit with your own colors and is great way to explore how different color combinations will look before you start knitting.



**Tractor  
Socks**  
by Lucy Neatby

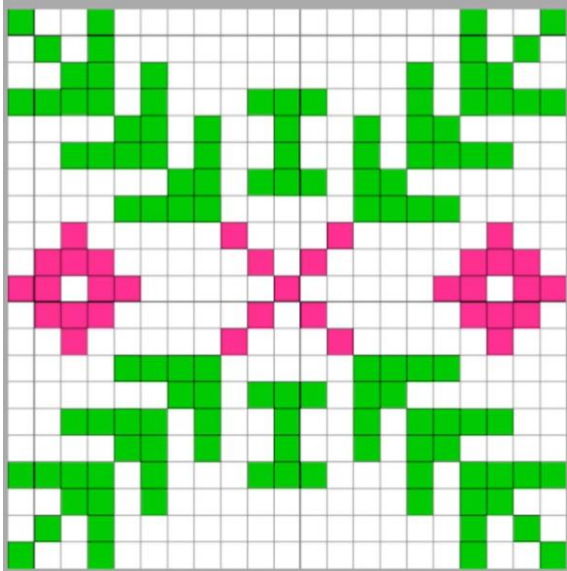


## Recolor a Colorwork Chart

You can recolor a colorwork chart to match your own color preferences.

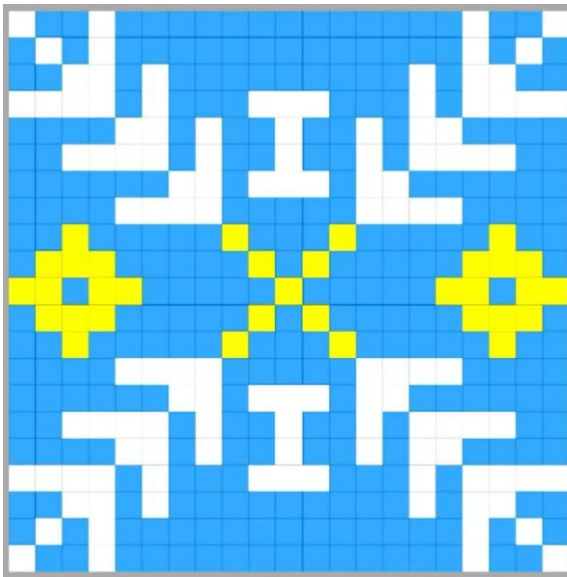
### Match Your Yarn Colors

In the example below, the designer used white, pink, and green for their color choices.



We can use Magic Markers to find each of the three colors and change them to match our preferred yarn colors.

Below is the same chart, but we used Magic Markers to change the colors.



## Magic Swatching

Are you considering using different color combinations than those chosen by the designer? Test them with Magic Markers! Use Magic Markers to explore how different color combinations will look on a chart before starting to knit. We call this *Magic Swatching*.

Below is the same chart, but we used Magic Markers to explore a couple of different color combinations.

